

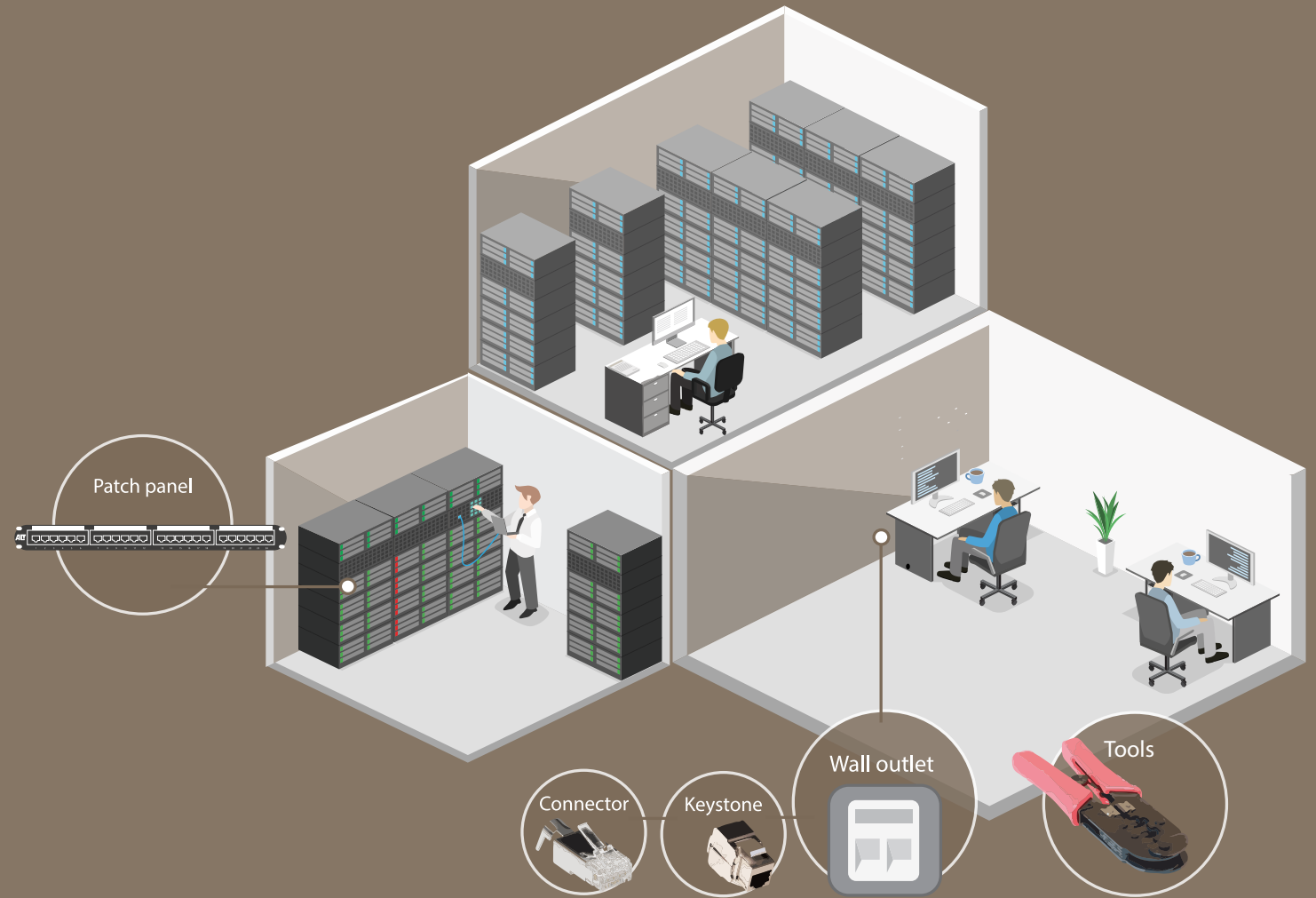
CAT6


Category 6, ISO Class E with a bandwidth of 250 MHz, can be used for 100 Mbps and 1000 Mbps Ethernet networks, up to a maximum length of 100 meters. 10 Gigabit Ethernet can be used for a maximum length of 55 meters. The maximum length is 37 meters when the cables are bundled, due to alien crosstalk. Besides Ethernet, these cables are also suitable for other protocols, such as Profinet, ATM, Token Ring and RS-232 up to a distance of 100 meters.




The different cable types with the corresponding shielding

U/UTP Unshielded twisted pair.	F/UTP Twisted pair cable with foil shielding.	SF/UTP Twisted pair cable with foil and braided shielding.	U/FTP Twisted pair cable with foil shielding for each wire pair separately.	S/FTP Twisted pair cable with foil shielding for each wire pair plus additional braided shielding wrapped around all pairs.

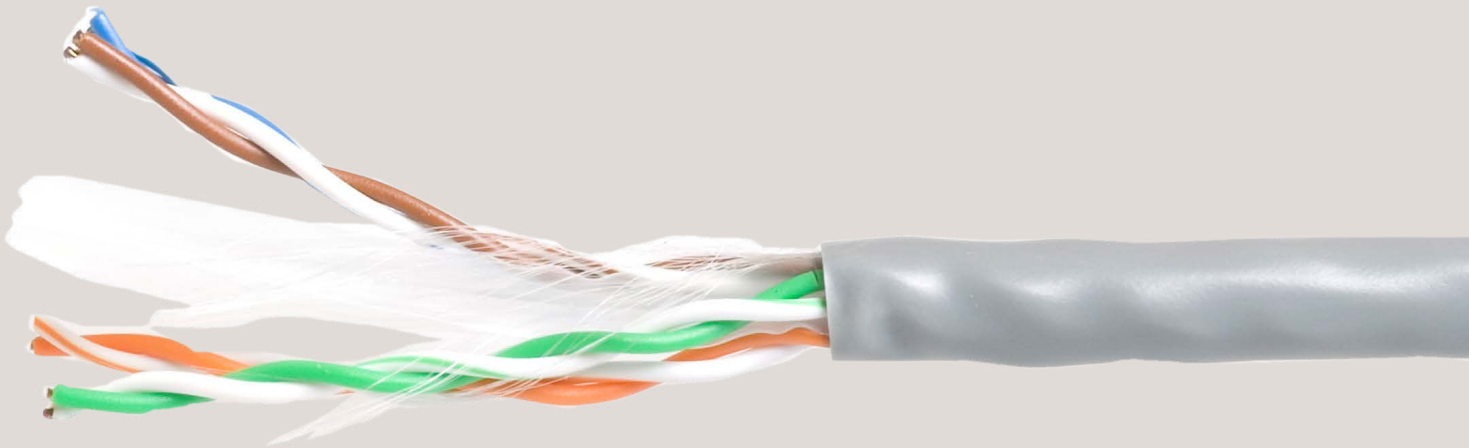


ACT CAT6, stranded twisted pair installation cable

Colour	Shielding	Outer Jacket	AWG	100m	305m box	500m reel
Ivory	U/UTP	PVC	24	EP840H	EP384B	EP845A
Grey	U/UTP	PVC	24	EP800H	EP380B	
Red	U/UTP	PVC	24	EP850H	EP385B	
Blue	U/UTP	PVC	24	EP860H	EP386B	
Green	U/UTP	PVC	24	EP870H	EP387B	
Yellow	U/UTP	PVC	24	EP880H	EP388B	
Black	U/UTP	PVC	24	EP890H	EP389B	
Grey	S/FTP	PVC	26		FP600B	
Red	S/FTP	PVC	26		FP655B	
Blue	S/FTP	PVC	26		FP656B	
Green	S/FTP	PVC	26		FP657B	
Yellow	S/FTP	PVC	26		FP658B	
Black	S/FTP	PVC	26		FP659B	


ACT CAT6 Solid twisted pair installation cable

Colour	Shielding	Outer Jacket	AWG	CPR level	DoP	100m	305m box	500m reel
Grey	U/UTP	PVC	24	Eca	1186887	XS100H	XS305B	
Grey	F/UTP	PVC	24	Eca	1186889		FS6003	FS6005
Purple	F/UTP	LSZH	24	Eca	1186890		FS6013	FS6015
Grey	U/UTP	PVC	24	B2ca	1175349		XS6001	XS6002
Purple	U/UTP	LSZH	24	Dca	1176113		XS6003	



ACT


Surface mounted box and In-wall keystone jack box CAT6



Description		Connector	Type no.
Unshielded	Surface mounted box	1 x RJ45, 1 x IDC	FA6003
Unshielded	Surface mounted box	2 x RJ45, 2 x IDC	FA6002
Keystone jack	In-Wall keystone jack box	2 x keystone	FA6010

ACT


Surface mounted box shielded CAT6



Description		Connector	Type no.
Shielded	Surface mounted box	1 x RJ45, 1 x IDC	FA6005
Shielded	Surface mounted box	2 x RJ45, 2 x IDC	FA6004

ACT

Keystone unshielded CAT6




Description	Cable attachment	Colour	Type no.
Unshielded punch down	Back	Black	TD6012
Unshielded punch down	Back	White	TD6013
Unshielded punch down	Down	Black	TD6014
Unshielded punch down	Down	White	TD6015
Unshielded toolfree	Back	Black	TD6010
Unshielded toolfree	Back	White	TD6011
Unshielded coupler RJ45	Back	White	SD6009

ACT keystones are compatible with all ACT hardware

ACT

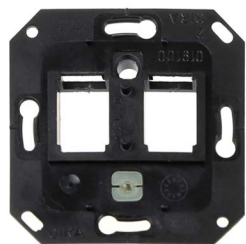
Keystone shielded CAT6



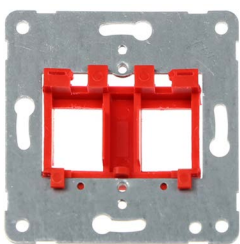
Description	Cable attachment	Colour	Type no.
Shielded punch down	Back	Metal	TD6021
Shielded punch down	Down	Metal	TD6022
Shielded toolfree	Back	Metal	TD6020
Shielded coupler RJ 45	Back	Metal	SD6019

ACT keystones are compatible with all ACT hardware

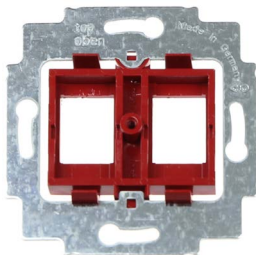
Compatible with all listed keystones



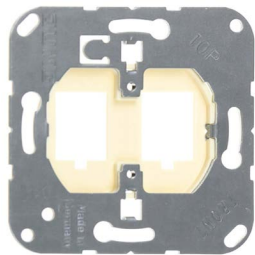
Gira*
19100



Peha*
740011



Busch-Jaeger*
2CKA001753A8055



Jung*
569-2NWE / CD569-2NWEWW

*All brand names mentioned are the property of their trademark owners.

ACT Patch panel CAT6



Description	Ports	Connector	Type no.
Unshielded	24 Ports	RJ45, IDC	PP1010
Shielded	24 Ports	RJ45, IDC	PP1012
Keystone panel	24 Ports	Suitable for mounting keystones	PP1030
Unshielded	Consolidation point	8 x RJ45, 8 x IDC	FA6000
Shielded	Consolidation point	8 x RJ45, 8 x IDC	FA6001

ACT Multimedia inserts/keystones



Description	Type no.
LC Duplex adapter Singlemode/Multimode	TD4101
HDMI 2.0 A-A female	TD4102
HDMI 2.0 A-A female angled	TD4103
USB 3.2 Gen1 A-A female	TD4104
USB 3.2 Gen2 C-C female	TD4105
Compatible with ACT hardware such as PP1030, FA6010/11/12	

ACT Connectors CAT6



Description	Type no.
Unshielded	Suitable for solid and flexible cable with positioning block, AWG24-AWG26 TD168M
Shielded	Suitable for solid and flexible cable with positioning block, AWG26-AWG24 TD168A
Unshielded	Suitable for solid and flexible cable with positioning block, AWG23-AWG26 TD168B
Shielded	Suitable for solid and flexible cable with positioning block, AWG23-AWG26 TD168C

ACT Tools



Description	Type no.
Krone punch tool	LSA plus 64172K
UTP cable stripper	For flat and round cables FHT501
Punch tool	For 110 block TD060
Modular crimp tool	Strip and cut the cable, and crimp the connectors to the cable TD005
Modular crimp tool	For easy connect RJ45 connectors, crimp and cut the wires in one step TD168T

CAT6 - patch cable




ACT CAT6 U/UTP PVC patch cable, AWG24 CU, 50µ gold-plated contacts


Colour	0.25m	0.5m	1m	1.5m	2m	3m	5m	7m	10m	15m	20m	30m
Ivory	IB8452	IB8400	IB8401	IB8451	IB8402	IB8403	IB8405	IB8407	IB8410	IB8415	IB8420	IB8430
Grey	IB8052	IB8000	IB8001	IB8051	IB8002	IB8003	IB8005	IB8007	IB8010	IB8015	IB8020	IB8030
Red	IB8552	IB8500	IB8501	IB8551	IB8502	IB8503	IB8505	IB8507	IB8510	IB8515	IB8520	
Blue	IB8652	IB8600	IB8601	IB8651	IB8602	IB8603	IB8605	IB8607	IB8610	IB8615	IB8620	
Green	IB8752	IB8700	IB8701	IB8751	IB8702	IB8703	IB8705	IB8707	IB8710	IB8715	IB8720	
Yellow	IB8852	IB8800	IB8801	IB8851	IB8802	IB8803	IB8805	IB8807	IB8810	IB8815	IB8820	
Black	IB8952	IB8900	IB8901	IB8951	IB8902	IB8903	IB8905	IB8907	IB8910	IB8915	IB8920	
Orange		IB1500	IB1501	IB1551	IB1502	IB1503	IB1505	IB1507	IB1510	IB1515	IB1520	
Brown		IB1600	IB1601	IB1651	IB1602	IB1603	IB1605	IB1607	IB1610	IB1615	IB1620	
Purple		IB1700	IB1701	IB1751	IB1702	IB1703	IB1705	IB1707	IB1710	IB1715	IB1720	
Pink		IB1800	IB1801	IB1851	IB1802	IB1803	IB1805	IB1807	IB1810	IB1815	IB1820	
White		IB9400	IB9401	IB9451	IB9402	IB9403	IB9405	IB9407	IB9410	IB9415	IB9420	

ACT CAT6 U/UTP PVC snagless patch cable, AWG24 CU, 50µ gold-plated contacts

Colour	0.25m	0.5m	1m	1.5m	2m	2.5m	3m	4m	5m	7m	10m	15m	20m	30m
Ivory	IS8452	IS8400	IS8401	IS8451	IS8402		IS8403		IS8405	IS8407	IS8410	IS8415	IS8420	IS8430
Grey	IS8052	IS8000	IS8001	IS8051	IS8002	IS8053	IS8003	IS8004	IS8005	IS8007	IS8010	IS8015	IS8020	IS8030
Red	IS8552	IS8500	IS8501	IS8551	IS8502		IS8503		IS8505	IS8507	IS8510	IS8515	IS8520	
Blue	IS8652	IS8600	IS8601	IS8651	IS8602		IS8603		IS8605	IS8607	IS8610	IS8615	IS8620	
Green	IS8752	IS8700	IS8701	IS8751	IS8702		IS8703		IS8705	IS8707	IS8710	IS8715	IS8720	
Yellow	IS8852	IS8800	IS8801	IS8851	IS8802		IS8803		IS8805	IS8807	IS8810	IS8815	IS8820	
Black	IS8952	IS8900	IS8901	IS8951	IS8902		IS8903		IS8905	IS8907	IS8910	IS8915	IS8920	
Orange		IS1500	IS1501	IS1551	IS1502		IS1503		IS1505	IS1507	IS1510	IS1515	IS1520	
Brown		IS1600	IS1601	IS1651	IS1602		IS1603		IS1605	IS1607	IS1610	IS1615	IS1620	
Purple		IS1700	IS1701	IS1751	IS1702		IS1703		IS1705	IS1707	IS1710	IS1715	IS1720	
Pink		IS1800	IS1801	IS1851	IS1802		IS1803		IS1805	IS1807	IS1810	IS1815	IS1820	

ACT CAT6 U/UTP LSZH patch cable, AWG24 CU, 50µ gold-plated contacts

Colour	0.5m	1m	1.5m	2m	3m	5m	7m	10m
Grey	IB9000	IB9001	IB9051	IB9002	IB9003	IB9005	IB9007	IB9010
Red	IB9500	IB9501	IB9551	IB9502	IB9503	IB9505	IB9507	IB9510
Blue	IB9600	IB9601	IB9651	IB9602	IB9603	IB9605	IB9607	IB9610
Green	IB9700	IB9701	IB9751	IB9702	IB9703	IB9705	IB9707	IB9710
Yellow	IB9800	IB9801	IB9851	IB9802	IB9803	IB9805	IB9807	IB9810
Black	IB9900	IB9901	IB9951	IB9902	IB9903	IB9905	IB9907	IB9910
Wit	IB8300	IB8301		IB8302	IB8303	IB8305		

ACT CAT6 U/UTP PVC cross-over patch cable, AWG24 CU, 50µ gold-plated contacts

Colour	0.5m	1m	2m	3m	10m
cables Boot	IB8100	IB8101	IB8102	IB8103	IB8110

ACT CAT6 S/FTP PIMF LSZH patch cable, AWG26 CU, 50µ gold-plated contacts

Colour	0.25m	0.5m	1m	1.5m	2m	3m	5m	7m	10m	15m	20m	25m	30m
Grey	FB9052	FB9000	FB9001	FB9051	FB9002	FB9003	FB9005	FB9007	FB9010	FB9015	FB9020	FB9025	FB9030
Red		FB9500	FB9501	FB9551	FB9502	FB9503	FB9505	FB9507	FB9510	FB9515	FB9520	FB9525	FB9530
Blue		FB9600	FB9601	FB9651	FB9602	FB9603	FB9605	FB9607	FB9610	FB9615	FB9620	FB9625	FB9630
Green		FB9700	FB9701	FB9751	FB9702	FB9703	FB9705	FB9707	FB9710	FB9715	FB9720	FB9725	FB9730
Yellow		FB9800	FB9801	FB9851	FB9802	FB9803	FB9805	FB9807	FB9810	FB9815	FB9820	FB9825	FB9830
Black		FB9900	FB9901	FB9951	FB9902	FB9903	FB9905	FB9907	FB9910	FB9915	FB9920	FB9925	FB9930



ACT component level patch cable

ACT component level patch cables

Flexibility in your network is achieved by using consolidation points. But consolidation points add an extra transition to your cabling. This can affect the reliability of your network.

Did you know that an additional transition/cable in the network also adds two additional connectors? (Each cable has two connectors). This results in an additional connector transition in the horizontal cabling: the so-called 4-connector model.

ACT component level patch cords compensate for extra transitions in your network thanks to the very high quality. The component level patch cables are used when using an extra consolidation point in your network and at cross-connects.

An ACT component level patch cable must always meet the set standards in the field of transmission speeds. These are the best quality patch cords where extra attention is paid to the mounting of the cable in the connector. Everything to ensure that there is as little loss of speed as possible.

ACT

CAT6 component level U/UTP PVC snagless patch cable, AWG24 CU, 50µ gold-plated contacts

Colour	0.5m	1m	1.5m	2m	3m	5m	7m	10m
Ivory	IK8400	IK8401	IK8451	IK8402	IK8403	IK8405	IK8407	IK8410
Red	IK8500	IK8501	IK8551	IK8502	IK8503	IK8505	IK8507	IK8510
Blue	IK8600	IK8601	IK8651	IK8602	IK8603	IK8605	IK8607	IK8610
Green	IK8700	IK8701	IK8751	IK8702	IK8703	IK8705	IK8707	IK8710
Yellow	IK8800	IK8801	IK8851	IK8802	IK8803	IK8805	IK8807	IK8810
Black	IK8900	IK8901	IK8951	IK8902	IK8903	IK8905	IK8907	IK8910

When to use slimline patch cable?

Slimline patch cables can be used where cable space is limited, such as in a data center. The slimline version of standard patch cables is more than 40% smaller in diameter. These thin cables reduce the amount of cable space required in racks. This ensures maximum energy efficiency, better cable management and space savings.

ACT

CAT6 U/UTP LSZH datacenter slimline patch cable, AWG28 CU, 50µ gold-plated contacts

Colour	0.25m	0.5m	1m	1.5m	2m	3m	5m
Grey	DC9052	DC9000	DC9001	DC9051	DC9002	DC9003	DC9005
Red	DC9552	DC9500	DC9501	DC9551	DC9502	DC9503	DC9505
Blue	DC9652	DC9600	DC9601	DC9651	DC9602	DC9603	DC9605
Green	DC9752	DC9700	DC9701	DC9751	DC9702	DC9703	DC9705
Yellow	DC9852	DC9800	DC9801	DC9851	DC9802	DC9803	DC9805
Black	DC9952	DC9900	DC9901	DC9951	DC9902	DC9903	DC9905

ACT datasheet

Our ACT patch cables are provided with a datasheet. You can download this datasheet on our website.

