



# TEST-i

## Multi Function Cable Tester

The third generation of PC cable tester TEST-i, a specially designed multi function cable tester that tests and analyzes a comprehensive range of PC connector types and the most commonly used flat cables.

The TEST-i not only tests each pins connection to identify opened wires, shorted wires, cross wires, and mis-wires. It also shows pin-to-pin connectivity, and can also records up to 100 test results. The crucial data collected can be saved and uploaded to a PC via USB for analysis. With an integrated LCD display (with back light function), users can clearly determine the cable pin wiring easily and efficiently. The TEST-i makes an excellent and essential tool for a system integrator to quickly troubleshoot and perform pin-to-pin test on PC cables.

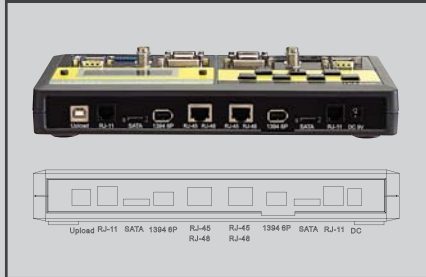
### Features

- Identify opened wires, shorted wires, cross wires, and mis-wires connectivity
- Support 18 flat types of PC connectors
- 100 test results can be saved and transferred to PC via USB line
- Alphanumeric LCD display with back light
- With test cable, browse, quick test function
- Low battery indicator

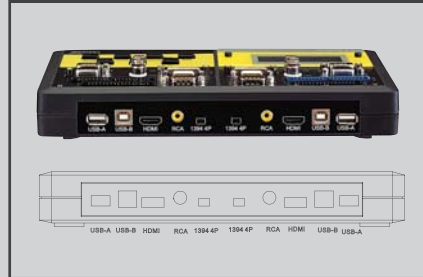
### Specifications

- Model No.: 258898
- Connectors: IDC40, IDC34, DVI29, HDB15M/F, DB9M/F, COAX, BNC, RJ11, RJ45, 1394-6P, 1394-4P, SATA, USB (A/B), HDMI, RCA
- Control switch: On/OFF, UP, DOWN, SAVE, DELETE, BACK, ENTER
- Display: LCD size, 2 rows-16 characters, backlight
- Power: DC 9V battery compartment, DC 9V 150mA power jack (adapter not included)

### Front side



### Back side



### Order Information

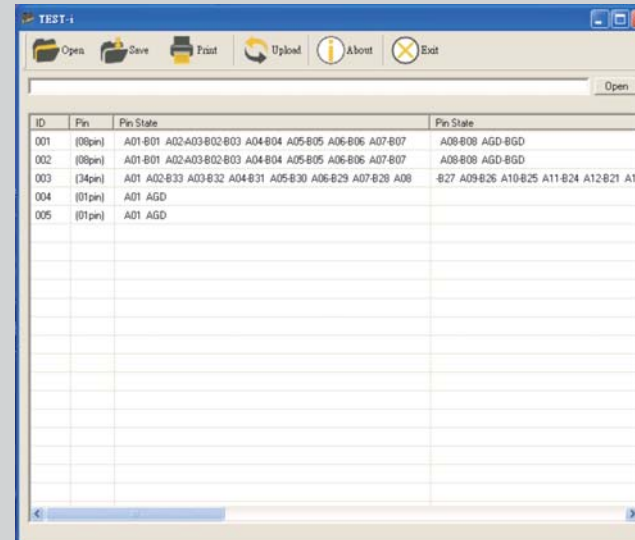
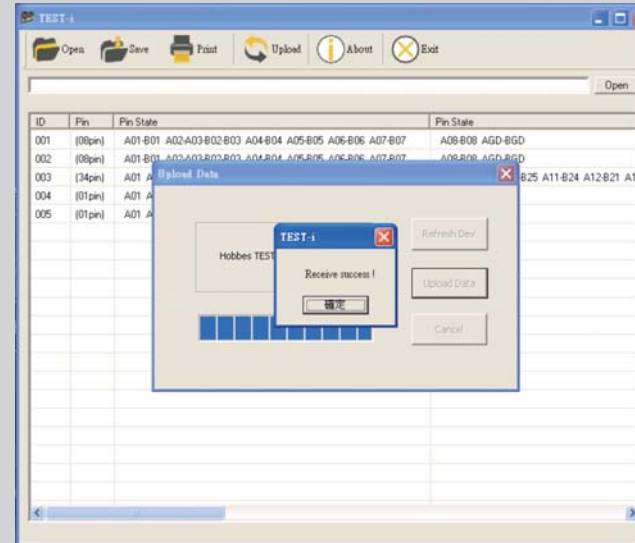
**258898** TEST-i Multi function cable tester

### Related Products



- Ribbon Cable Tester Pin number 20 was taken off for IDE 40 pins cable test

### TEST-i uploading data



Cable Tester	258894	258891A	258898
<b>Connectors</b>	TX: IDC 50/40/34/26/10 Male, DB15 Male, DB9 Female RX: IDC 50/40/34/16/10 Male DB25 Male and Female	TX: D25 M/F, DB9 M/F, HDB 15/M, DB15/M, RJ45/F RX: Centronics 36/F, DB25 M/F, DB9 M/F, HDB15/F, DB15/F, RJ45/F BNC female, 1394 socket, USB socket, Series ATA	IDC40, IDC34, DVI29, HDB15M/F, DB9M/F, COAX, BNC, RJ11, RJ45, 1394-6P, 1394-4P, SATA, USB (A/B), HDMI, RCA
<b>Control switch</b>	READ, UP, DOWN, TEST	Wire numbers select, Test (For manual operation), Auto/Manual scanning switch, Scanning speed HI/Low switch, Power on/off switch	Control Switch ON/OFF, UP, DOWN, SAVE, DELETE, BACK, ENTER
<b>Extension Port</b>	2 x 40 pins IDC male connectors	stand alone	stand alone
<b>Display</b>	LCD display w/back light	TX: 25 LEDs RX: 36 LEDs Battery Low x 1 Ground TX Ground RX 4 sections wires selection (for 4,9,15,25)	LCD display w/back light
<b>Power</b>	9V DC battery or 9V DC 150mA power adapter	DC 9V battery compartment DC 9V 150mA power jack	Power DC 9V battery compartment, DC 9V 150mA power jack (adapter not included)
<b>Cable test</b>	Opened, shorted, mis-wires continuity, and pin configuration	Opened, shorted, mis-wires, continuity, and pin configuration	Opened, shorted, cross wires, mis-wires, and pin-to-pin
<b>Wire map</b>	Yes	Yes	Yes
<b>Quick test</b>	Yes	No	Yes
<b>Save</b>	No	No	save and uploaded to PC via USB line
<b>Data</b>	No	No	100 results
<b>Dimension</b>	250 x 134 x 35mm	250 x 130 x 35mm	250 x 138 x 44mm
<b>Weight</b>	757.6g	668.1g	802.7g