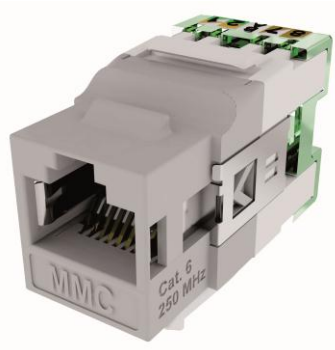


REF: BC6xx

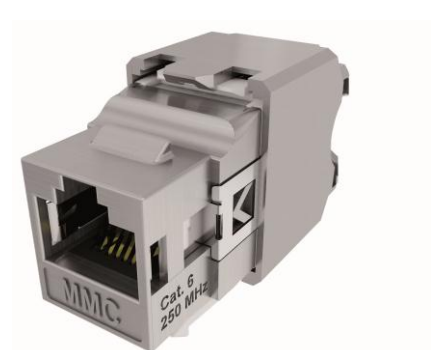
RJ45 Keystone Connector « BC » range Category 6



BC6NB



BC6AN



BC6FS

Descriptions

- Compactness of BC connector improves cable's management and obstruction.
- Equipped with a translucent wire sorting insert bar to allow easy visual inspection of wiring
- Connecting without tool or with BCTOOL
- Visibility of the code colour to ensure a visual monitoring during connection
- Metal contact for the grounding on the patch panel for AN and FS version
- Connexion point to connect the drain wire in AN version and 360° shielded in FS version
- Universal Keystone type

Standards et performances

The performances of the connectors correspond to the limits defined by the standards following :

CONNECTOR	SYSTEME
IEC 60603-7	EIA/TIA 568-B.2-1 Category 6
EN 60603-7-4	ISO 11801 Edition 2
FCC Part 68 Subpart F	EN 50173 Edition 2
TIA-570-B	
UL 1863	

Electrical properties

Connectors

Resistance of contact	$\leq 20 \text{ m}\Omega$ IEC 60512-2-1 Test 2a
Resistance of input/output	$\leq 200 \text{ m}\Omega$ IEC 60512-2-1 Test 2a
Resistance of insulation	$\geq 500 \text{ m}\Omega$ à 100V DC. IEC 60512-3-1Test 3a
Voltage	$\geq 1000\text{V DC}$ contact $\geq 1500\text{V DC}$ shield (IEC 60512-4-1 Test 4a Method A)
Cycles of insertion	> 1000
Intensity	$\leq 0.175\text{mA}$ by conductor
Operating voltage	$\leq 72\text{V DC}$
Capacity of power	$\leq 10\text{W}$
Disturbance of vibration	$\leq 10\mu\text{s}$ (3 axes) (IEC 60512-4-1 Test 2e)

REF: BC6xx

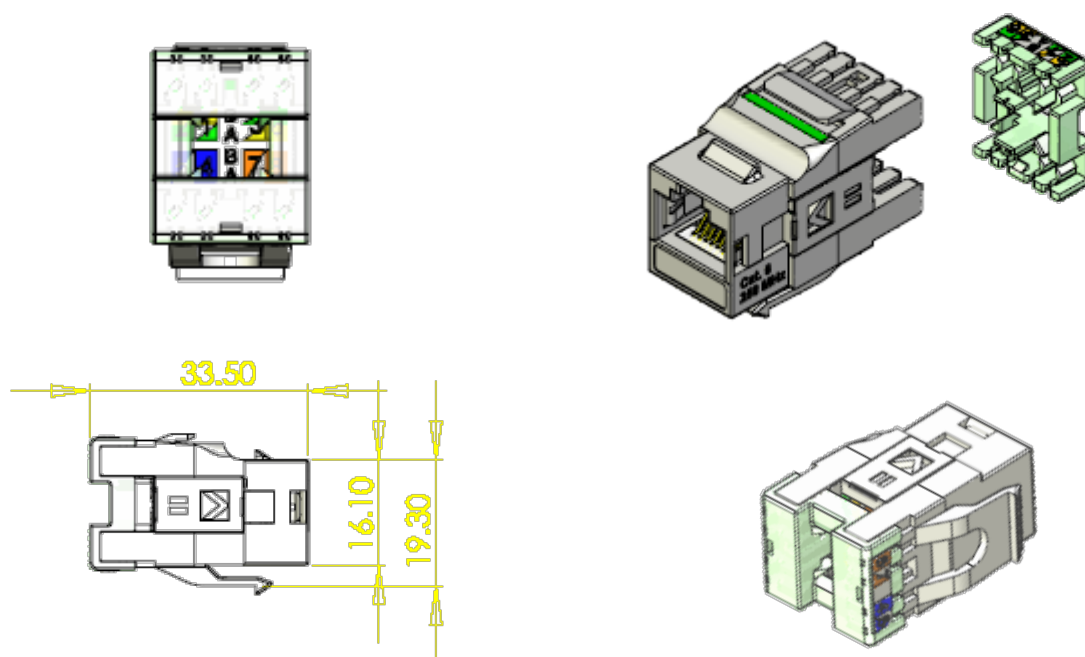
RJ45 Keystone Connector « BC » range Category 6

Technical properties

Connectors

Connection without tool by CAD	Bronze + platine / Cu + SnPb 80μ"
Solid conductor	AWG 24, AWG 23 and AWG 22
Contacts	Bronze, platine Ni+Au 1.2μm
Metal body	ABS or PC UL94V0
Operating temperature	-40°C to 70°C
Colour code	T568A and T568B

3D Picture



Related product

Part number	Designation	Packaging
BCPANxUy	Patch panel	Unit
BC45xC	Face plate	Unit

Ordering information

Item No	Designation	Shielding	Packaging
BC6NB	RJ45 BASIC connector unshielded category 6	Unshielded	8 or 50
BCAN	RJ45 BASIC connector half-shielded category 6	Half-shielded	8 or 50
BC6FS	RJ45 BASIC connector full-shielded category 6	Full-shielded	8 or 50