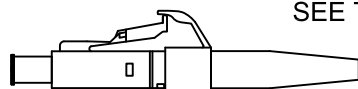
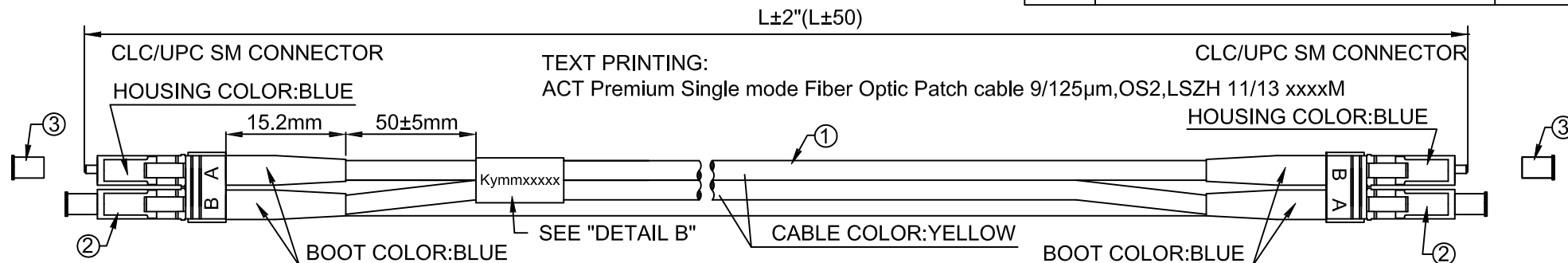


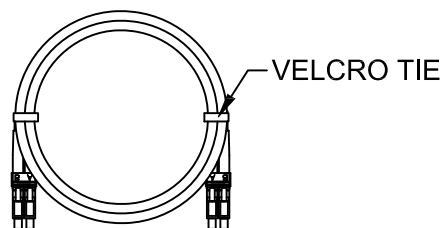
REV.	REVISION	DATE



(YOKE FACE UP)

## PACKING:

ROUND CABLE METHOD SEE "DETAIL A"			
	BAG TYPE	QTY	LABEL
SMALL	POLYBAG	1 CABLE WITH TEST CARD	SEE "DETAIL C"
MEDIUM	POLYBAG	5 CABLES	NONE
LARGE	POLYBAG	ALL	NONE
EACH LARGE POLYBAG IN AN OUTER CARTON			



DETAIL A

**ACT** Fiber Optical Patchcord

CLC/UPC to CLC/UPC Duplex Singlemode 9/125, OS2, Ø2.0mm LSZH\* M-RoHS

Model: xxxxx - xxxxxx  
Lot number: \_\_\_\_\_

Performance (@23°C)  $\lambda = 1310/1550 \pm 20\text{nm}$

Serial No	Insertion Loss	
	1310nm	1550nm
Kymmxxxxx	A	
	B	
	C	
	D	

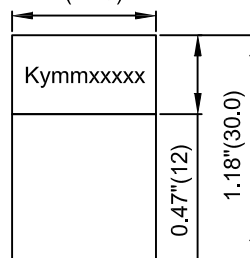
- ACT advises to clean connector ferrule before usage to get optimal performance  
- Always leave the dust caps on if the cable isn't installed

Prepared By: \_\_\_\_\_ Date: \_\_\_\_\_

PO/NO. \_\_\_\_\_



DETAIL C



DETAIL B

y: Year; mm: Month  
xxxxx: Serial Number

RL1750	50	50	164'(50000)	LC/LC 9/125 SHORT DUP	8716065322101
RL1730	30	30	98.4'(30000)	LC/LC 9/125 SHORT DUP	8716065322095
RL1725	25	25	82'(25000)	LC/LC 9/125 SHORT DUP	8716065322088
RL1720	20	20	65.6'(20000)	LC/LC 9/125 SHORT DUP	8716065322071
RL1715	15	15	49.2'(15000)	LC/LC 9/125 SHORT DUP	8716065322064
RL1710	10	10	32.8'(10000)	LC/LC 9/125 SHORT DUP	8716065322057
RL1705	05	5	16.4'(5000)	LC/LC 9/125 SHORT DUP	8716065322040
RL1703	03	3	9.84'(3000)	LC/LC 9/125 SHORT DUP	8716065322033
RL1702	02	2	6.56'(2000)	LC/LC 9/125 SHORT DUP	8716065322026
RL1701	01	1	3.28'(1000)	LC/LC 9/125 SHORT DUP	8716065322019
PART NO.	**	xx	L	DESCRIPTION 1	DESCRIPTION 2

CUSTOMER APPROVAL: \_\_\_\_\_

DATE: \_\_\_\_\_

**ACT**

	UNIT: Inches[mm]	TITLE: PATCHCORD LC-LC SINGLEMODE DUPLEX 9/125, OS2, 2.0mm LSZH, YELLOW.		
	DATE 2015/02/02	CUSTOMER CUSTOMER PART NO. RL17**		
DRAWN BY Vernon	DATE	DRAWING NO.	Ref. NO.	REV. A
CHECKED BY	DATE	TRENDX PART NO.		
APPROVED BY	DATE			
SALE BY	DATE			

3	4PCS		LC DUST COVER, WHITE.
2	4SETS		CONNECTOR: CLC/UPC SM, BLUE HOUSING WITH SHORT BLUE BOOT.
1	1PC		CABLE: SINGLEMODE, 9/125µm, 2.0mm ZIPCORD, LSZH YELLOW JACKET.
ITEM	Q'TY	PART NO.	DESCRIPTION
PART LIST			