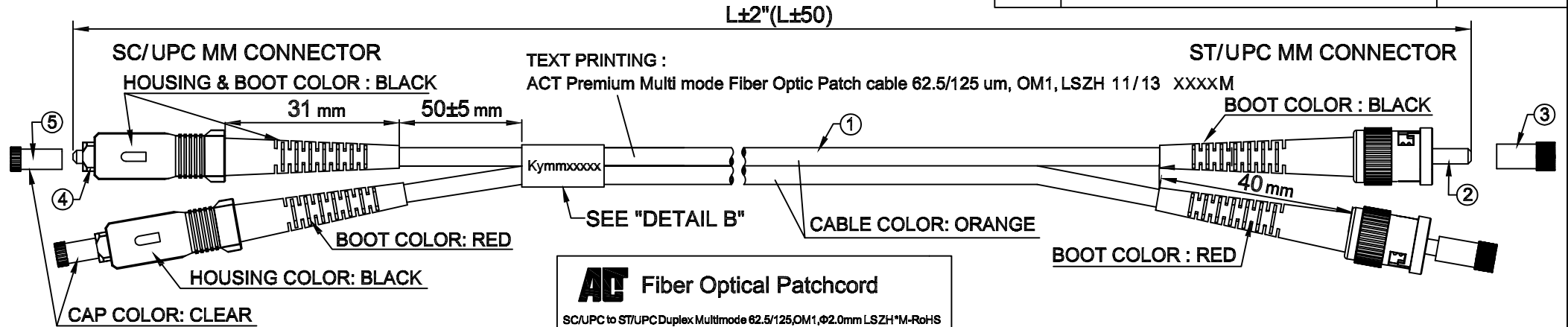


REV.	REVISION	DATE



**AC Fiber Optical Patchcord**

SC/UPC to ST/UPC Duplex Multimode 62.5/125 OM1, Ø2.0mm LSZH "M-RoHS"

Model: xxxxx-xxxxxx  
Lot number: xxxxxxxxxx

Performance: (@23°C) λ=850/1300±20nm

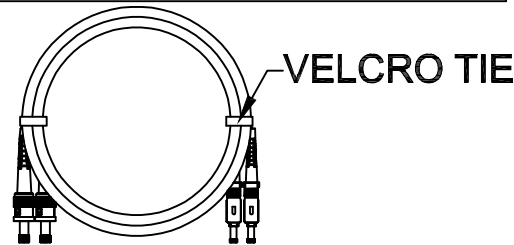
Serial No	Insertion Loss	
	850nm	1300nm
Kymmmxxxxx	A	
	B	
	C	
	D	

- ACT advises to clean connector ferrule before usage to get optimal performance  
- Always leave the dust caps on if the cable isn't installed

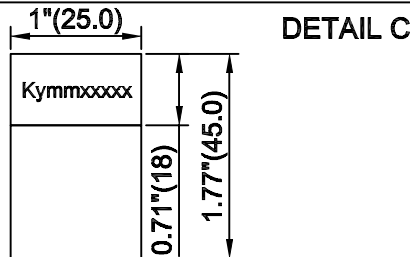
Prepared By: \_\_\_\_\_ Date: \_\_\_\_\_

**PACKING:**

ROUND CABLE METHOD SEE "DETAIL A"			
	BAG TYPE	QTY	LABEL
SMALL	POLYBAG	1 CABLE WITH TEST CARD	SEE "DETAIL C"
MEDIUM	POLYBAG	5 CABLES	NONE
LARGE	POLYBAG	ALL	NONE
EACH LARGE POLYBAG IN AN OUTER CARTON			



**DETAIL A**



**DETAIL B**

y: Year; mm: Month  
xxxxx: Serial Number

RL2015	15	15	49.2'(15000)	412215-RL2015	8716065223620
RL2010	10	10	32.8'(10000)	412210-RL2010	8716065223613
RL2005	05	5	16.4'(5000)	412205-RL2005	8716065170818
RL2003	03	3	9.84'(3000)	412203-RL2003	8716065170801
RL2002	02	2	6.56'(2000)	412202-RL2002	8716065170795
RL2051	51	1.5	4.92'(1500)	4122015-RL2051	8716065223606
RL2001	01	1	3.28'(1000)	412201-RL2001	8716065170788
PART NO.	**	xx	L	DESCRIPTION 1	DESCRIPTION 2

CUSTOMER APPROVAL: \_\_\_\_\_ DATE: \_\_\_\_\_



DRAWN BY <b>Vernon</b>	UNIT: Inches[mm]	TITLE: PATCHCORD SC-ST MULTIMODE DUPLEX 62.5/125, OM1, 2.0mm, LSZH, ORANGE.		
	DATE 2014/06/12			
CHECKED BY	DATE	CUSTOMER	CUSTOMER PART NO. RL20**	
APPROVED BY	DATE	DRAWING NO. PK709003	Ref. NO.	REV. A
SALE BY	DATE	TRENDX PART NO.		

5	2PCS		SC DUST COVER, CLEAR.
4	2SETS		CONNECTOR: SC/UPC MM, BLACK HOUSING WITH BLACK & RED BOOT.
3	2PCS		ST DUST COVER, CLEAR.
2	2SETS		CONNECTOR: ST/UPC MM, WITH BLACK & RED BOOT.
1	1PC		CABLE: MULTIMODE, 62.5/125um, 2.0mm ZIPCORDER, LSZH ORANGE JACKET.
ITEM	Q'TY	PART NO.	DESCRIPTION
PART LIST			

## Product Specification

### STANDARD COMPLIANCES

ANSI/TIA-568-C.3

ISO 11801 OM1 /IEC60793-2-10 type A1a

Telcordia GR-326-CORE Issue 4 February 2010 Compliance

RoHS Compliance for the Requirement of European Union Issued Directive 2011/65/EU

### CONSTRUCTION & CHARACTERISTICS

Optical Performance	Insertion loss typical	0.1dB
	Insertion loss maximum	0.2dB
	Return loss	≥45dB
	Polish	UPC
Connector	Connector A side	IEC61754-4 SC connector
	Connector B side	IEC61754-10 ST connector
	Ferrule	Ceramic Zirconia (ZrO <sub>2</sub> )
Cable	Fiber class	OM1
	Fiber type	Multimode 62.5/125
	Cable type	I-V(ZN)H 2.0x4.1mm LSZH orange zipcord
	Tensile strength	90N (short time 150N)
	Operation temp.	-25°C to +80°C (5 cycles)
	Vibration	10 to 55 Hz 1.5mm double amplitude
Fire Performance	Flame retardancy	IEC 60332-1-2 and IEC 60332-3-22 Cat.A
	Smoke density LS	IEC 61034
	Absence of halogen ZH	IEC 60754-1
	Riser cable	LZSH/FRNC/TPE-O
Marking	ACT Premium Multi Mode Fiber Optic Patch Cable 62.5/125um, OM1, LSZH, 11/13, xxxxM	

### 100% tested and approved

End-face geometry 100% guaranteed

ACT advises to clean every connector ferrule before usage to get optimal performance

Always leave the dust caps on if the cable isn't installed