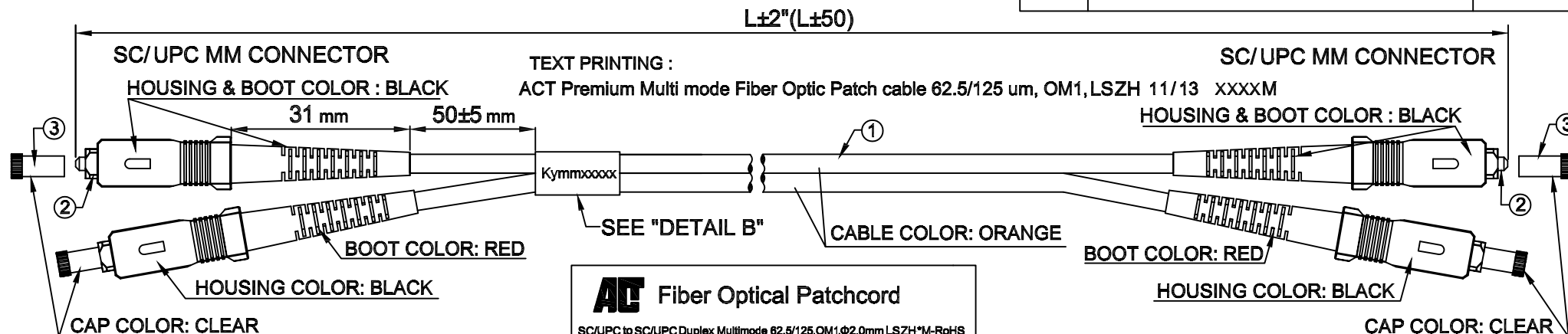


REV.	REVISION	DATE



SEE TABLE "DESCRIPTION 1"

PO/NO

AC Fiber Optical Patchcord

SC/UPC to SC/UPC Duplex Multimode 62.5/125,OM1,Φ2.0mm LSZH*M-RoHS

Model: xxxxx-xxxxxx

Lot number:

Performance: (@23°C) λ=850/1300±20nm

Serial No	Insertion Loss	
	850nm	1300nm
Kymmxxxxx	A	
	B	
	C	
	D	

- ACT advises to clean connector ferrule before usage to get optimal performance
- Always leave the dust caps on if the cable isn't installed

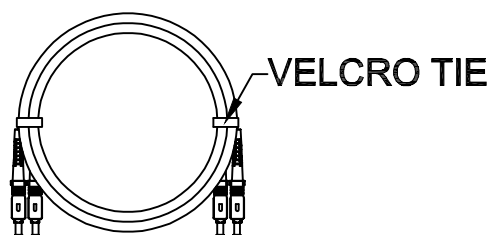
Prepared By: _____ Date: _____

SEE TABLE "DESCRIPTION 2"

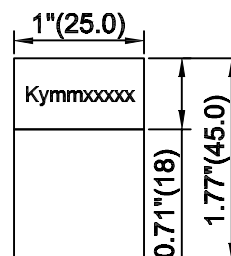
PACKING:

ROUND CABLE METHOD SEE "DETAIL A"

	BAG TYPE	QTY	LABEL
SMALL	POLYBAG	1 CABLE WITH TEST CARD	SEE "DETAIL C"
MEDIUM	POLYBAG	5 CABLES	NONE
LARGE	POLYBAG	ALL	NONE
EACH LARGE POLYBAG IN AN OUTER CARTON			



DETAIL A



DETAIL B

y: Year; mm: Month
xxxxx: Serial Number

DETAIL C

RL3050	50	50	164'(50000)	442250-RL3050	8716065223798
RL3020	20	20	65.6'(20000)	442220-RL3020	8716065223781
RL3015	15	15	49.2'(15000)	442215-RL3015	8716065223774
RL3010	10	10	32.8'(10000)	442210-RL3010	8716065223767
RL3005	05	5	16.4'(5000)	442205-RL3005	8716065170856
RL3003	03	3	9.84'(3000)	442203-RL3003	8716065170849
RL3002	02	2	6.56'(2000)	442202-RL3002	8716065170832
RL3051	51	1.5	4.92'(1500)	4422015-RL3051	8716065170863
RL3001	01	1	3.28'(1000)	442201-RL3001	8716065170825
PART NO.	**	xx	L	DESCRIPTION 1	DESCRIPTION 2

CUSTOMER APPROVAL:

DATE:

AC

DRAWN BY Vernon	UNIT: Inches[mm]	TITLE: PATCHCORD SC-SC MULTIMODE DUPLEX 62.5/125, OM1,2.0mm, LSZH, ORANGE.		
	DATE 2014/06/12			
CHECKED BY	DATE	CUSTOMER	CUSTOMER PART NO. RL30**	
APPROVED BY	DATE	DRAWING NO. PK709006	Ref. NO.	REV. A
SALE BY	DATE	TRENDEX PART NO.		

3	4PCS		ST DUST COVER, CLEAR.
2	4SETS		CONNECTOR: SC/UPC MM, BLACK HOUSING WITH BLACK & RED BOOT.
1	1PC		CABLE:MULTIMODE, 62.5/125um, 2.0mm ZIPCORD, LSZH ORANGE JACKET.
ITEM	Q'TY	PART NO.	DESCRIPTION
PART LIST			

Product Specification

STANDARD COMPLIANCES

ANSI/TIA-568-C.3

ISO 11801 OM1 /IEC60793-2-10 type A1a

Telcordia GR-326-CORE Issue 4 February 2010 Compliance

RoHS Compliance for the Requirement of European Union Issued Directive 2011/65/EU

CONSTRUCTION & CHARACTERISTICS

Optical Performance	Insertion loss typical	0.1dB
	Insertion loss maximum	0.2dB
	Return loss	≥45dB
	Polish	UPC
Connector	Connector A side	IEC61754-4 SC connector
	Connector B side	IEC61754-4 SC connector
	Ferrule	Ceramic Zirconia (ZrO2)
Cable	Fiber class	OM1
	Fiber type	Multimode 62.5/125
	Cable type	I-V(ZN)H 2.0x4.1mm LSZH orange zipcord
	Tensile strength	90N (short time 150N)
	Operation temp.	-25°C to +80°C (5 cycles)
	Vibration	10 to 55 Hz 1.5mm double amplitude
Fire Performance	Flame retardancy	IEC 60332-1-2 and IEC 60332-3-22 Cat.A
	Smoke density LS	IEC 61034
	Absence of halogen ZH	IEC 60754-1
	Riser cable	LZSH/FRNC/TPE-O
Marking	ACT Premium Multi Mode Fiber Optic Patch Cable 62.5/125um, OM1, LSZH, 11/13, xxxxM	

100% tested and approved

End-face geometry 100% guaranteed

ACT advises to clean every connector ferrule before usage to get optimal performance

Always leave the dust caps on if the cable isn't installed