

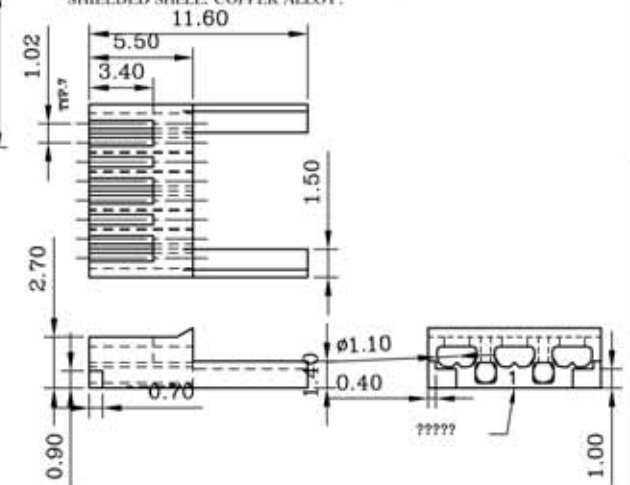
更改 REV	出图日期 DATE	设计内容 MODIFICATION	？ DRAWN
	2010/08/02		


SPECIFICATIONS

1.ELECTRICAL:
UL APPLICATIONS: 250 VOLTS AC MAX., AT 2 AMPS.
DIELECTRIC WITHSTANDING VOLTAGE: 500 VOLTS AC.
INSULATION RESISTANCE: 100 M Ω .
TERMINATION: RESISTANCE 20m Ω MAX AFTER ENVIRONMENTAL TESTING.

2.MECHANICAL:
CABLE-TO-PLUG TENSILE STRENGTH: 20POUND MIN.
DURABILITY: 200 MATING CYCLES.

3.MATERIAL & FINISH:
HOUSING: POLYCARBONATE, UL94V-0 OR UL94V-2.
COLOR: TRANSPARENT OR OTHER COLOR ARE AVAILABLE.
CONTACT BLADE: COPPER ALLOY.
CONDUCTOR: STRANDED & SOLID WIRE, 24AWG, 26 AWG.
GOLD PLATING: 3u"-50u", ARE AVAILABLE.
SHIELDED SHELL: COPPER ALLOY.

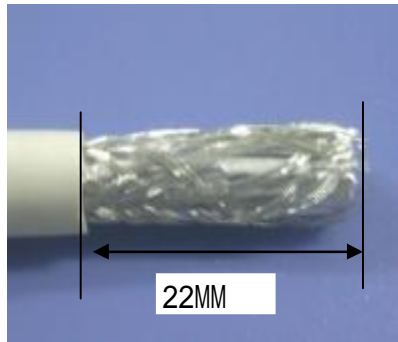


BLADE:	Z				CABLE TYPE	ROUND	
Drawing							
Mark					Mark	✓	
GOLD PLATING							50u"
Mark							✓



Instruction for Cat.6A STP Plug

1. Remove Cable' Jacket



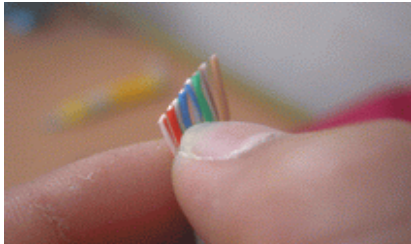
2. Cut 2/3 Cable's Braid



3. Cut foil for 4 Pair Wires

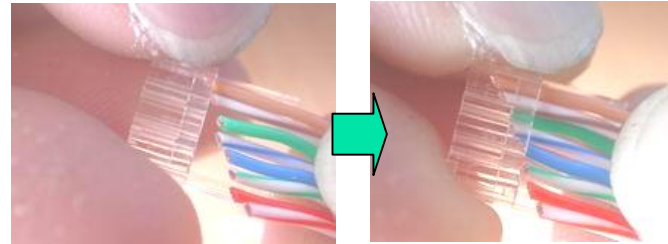


4. After arrangement, cut 2mm away



Remark: Cut the wires with a scissors in a oblique angle. It will be easier to insert the wires into loading bar.

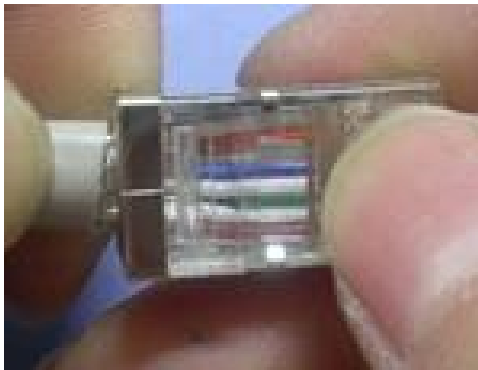
5. Put Wires into Insert



6. Cut the Balance Wires



7. Assemble Plug



8. Crimping Plug



Remark: According to FCC standard,
 $H=6.02\pm0.13M$

9. Molding

