

RWA SoHo SERIES WALL MOUNTED

**Robustness**

The welded frame and the robust and reliable structure ensures a static loading capacity up to 50 kg.

**Handiness**

Removable side panels for easy installation of the equipment.

**Fast Assembling**

Preassembled, easy to install and ready to use.

**Versatility**

Equipped with: 2/4 adjustable rails, numbered for simplifying the installation of the equipment; Tempered glass door openable at 180°; Top panel designed for supporting the fan unit.

**Security**

Front door equipped with lock.

**Accessories**

Supplied with 12 screws and cage nuts. It is also available a wide range of accessories to satisfy every requirement!

The RWA series wall mounted rack cabinet is the best entry-level solution for small installations in IT environments.



› Package

RWA - SoHo SERIES



› Screws and nuts included



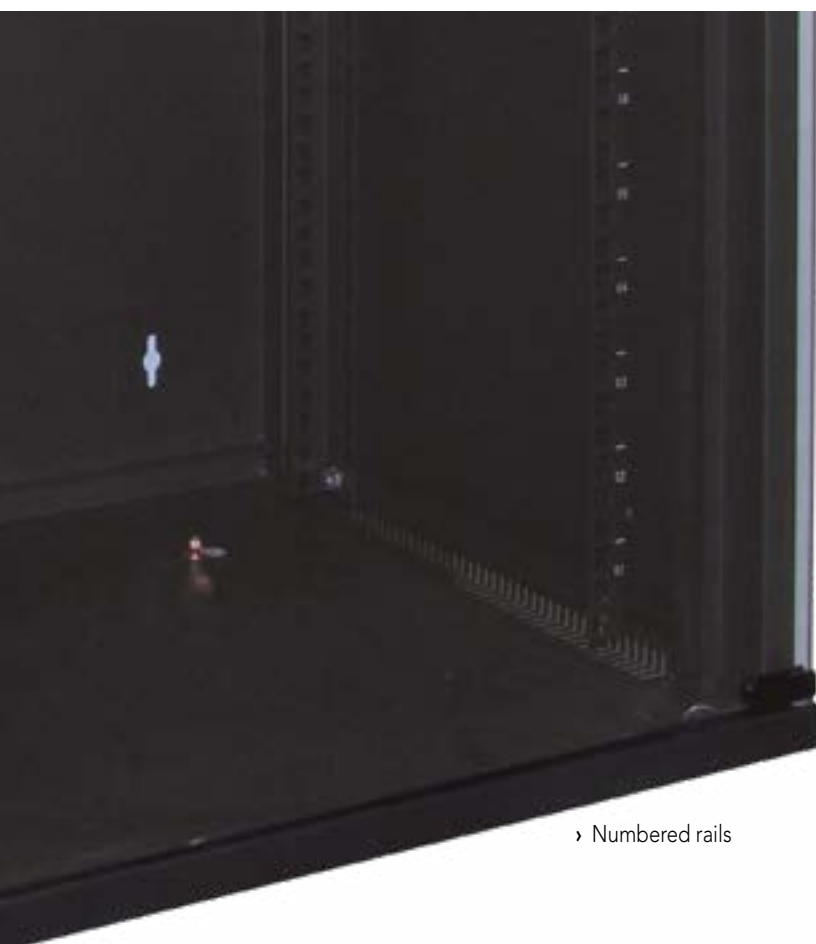
› 15 years warranty



› Removable side panels

DETAILS

- › 1,5 mm solid steel structure
- › Glass door opens to 180° and has a lock and key
- › The direction of the door opening can be changed as required
- › Removable side panels for an easy installation of the equipment
- › Cable entry on both top and bottom
- › Housing for 120 mm fans or special ventilation kit on the roof.
- › Load capacity up to 50 kg
- › Complete with 2/4 numbered rails with adjustable depth
- › Set of 12 screws and cage nuts included
- › Colour: Black, RAL 9005
- › IP 20 protection class



› Numbered rails

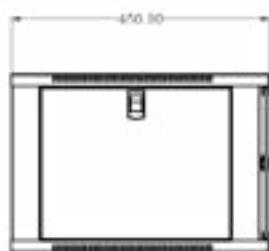


› Lock and key



› Removable side panel

RWA - SoHo SERIES



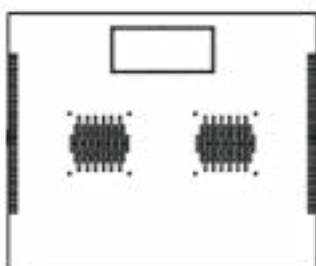
Side



Back



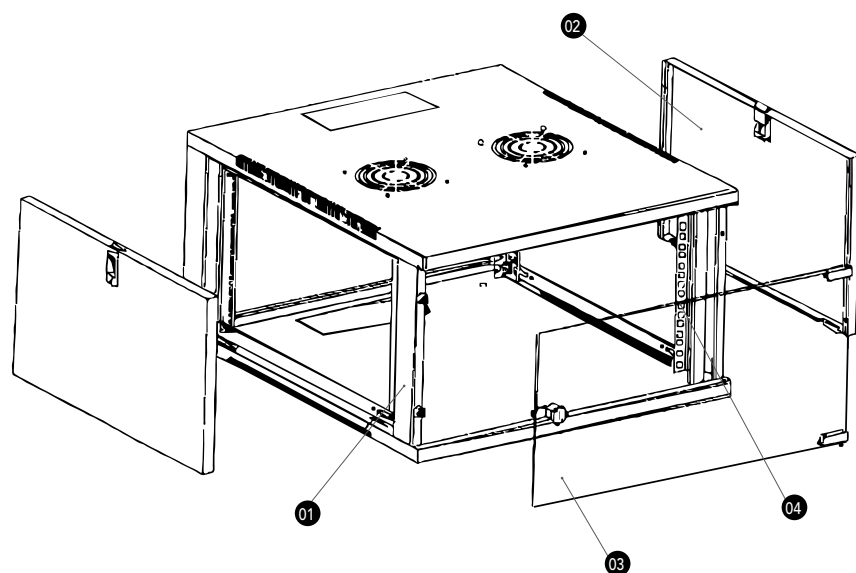
Front



Top



Bottom



- 01 Frame
- 02 Side panel
- 03 Front door
- 04 Vertical rail

RWA - SoHo SERIES

CODE	ASSEMBLED	UNIT N.	SIZES			WEIGHT	COLOUR	RAILS
			W	D	H	kg	RAL 9005 (Black)	
WPN-RWA-06604-B	•	6	540	450	310	13.0	•	2
WPN-RWA-06606-B	•	6	540	600	310	15.5	•	2
WPN-RWA-09604-B	•	9	540	450	445	16.5	•	4
WPN-RWA-09606-B	•	9	540	600	445	19.0	•	4
WPN-RWA-12604-B	•	12	540	450	580	19.5	•	4
WPN-RWA-12606-B	•	12	540	600	580	23.0	•	4
WPN-RWA-15604-B	•	15	540	450	720	23.0	•	4
WPN-RWA-15606-B	•	15	540	600	720	25.5	•	4

RWA SERIES ACCESSORI

CODE	DESCRIPTION
WPN-ACS-W040-2	Fan Tray 2 fans with protection grid + thermostat, for 450 mm deep racks
WPN-ACS-W060-2	Fan Tray 2 fans with protection grid + thermostat, for 600 mm deep racks

SHELVES

FIXED SHELF

Fixed shelf, 1 and 2 units, with 2 attachment points standard 19". The perforated shelf, ensures optimal ventilation.

- › Set of 4 screws and cage nuts included
- › Colour RAL 9005 (Black)
- › Load capacity up to 25 kg



CODE	DESCRIPTION
WPN-AFS-21030-B	1U shelf, depth 300 mm
WPN-AFS-21035-B	1U shelf, depth 350 mm
WPN-AFS-22035-B	2U shelf, depth 350 mm

FIXED SHELF FOR RSA SERIES

Fixed shelf, 1 unit, with 4 attachment points standard 19". The perforated shelf, ensures optimal ventilation.

- › Set of 4 screws and cage nuts included
- › Colour RAL 9005 (Black)
- › Load capacity up to 65 kg



CODE	DESCRIPTION
WPN-AFS-S241100-B	1U shelf, for 1000 mm deep racks
WPN-AFS-S241120-B	1U shelf, for 1200 mm deep racks

FIXED SHELF FOR STANDING RACKS

Fixed shelf, 1 unit, with 4 attachment points standard 19". The perforated shelf, ensures optimal ventilation.

- › Set of 4 screws and cage nuts included
- › Colour RAL 9005 (Black)
- › Load capacity up to 45 kg



CODE	DESCRIPTION
WPN-AFS-41060-B	1U shelf, for 600 mm RNA/RNB racks
WPN-AFS-41080-B	1U shelf, for 800 mm RNA/RNB racks
WPN-AFS-41100-B	1U shelf, for 1000 mm RNA/RSB racks
WPN-AFS-S141100-B	1U shelf, for 1000 mm RSA racks

SLIDING SHELF

Sliding shelf, 1 unit, with 4 attachment points standard 19". The perforated shelf, ensures optimal ventilation.

- › Set of 4 screws and cage nuts included
- › Colour RAL 9005 (Black)
- › Load capacity up to 25 kg



CODE	DESCRIPTION
WPN-ASS-141060-B	1U shelf, for 600 mm deep racks
WPN-ASS-141080-B	1U shelf, for 800 mm deep racks
WPN-ASS-141100-B	1U shelf, for 1000 mm deep racks

COOLING UNITS

COOLING FAN

Fan for rack cabinets complete with 2 m connection cable and STK9 (Schuko) plug.

- › Colour RAL 9005 (Black)
- › Complete with protection grid
- › Cable length: 2 m
- › Power supply: 230V - 50Hz



CODE	DESCRIPTION
WPN-ACS-FAN120	WxHxD 120x120x38 mm, 220v
WPN-ACS-FAN120T	WxHxD 120x120x38 mm, 220v + thermostat

FAN TRAY FOR RSA SERIES

Ventilation unit with four fans that can be installed on top of the 19" rack RSA series. The ventilation unit has a thermostat to keep the temperature inside the cabinet under control and avoid excessive power consumption.

- › Colour RAL 9005 (Black)
- › Complete with protective grids over the fans
- › Power supply: 230V - 50Hz



CODE	DESCRIPTION
WPN-ACS-S100-4	for 1000 deep cabinets, 4 fans + thermostat
WPN-ACS-S120-4	for 1200 deep cabinets, 4 fans + thermostat

FAN TRAY FOR RNA/RNB/RSB SERIES

Ventilation unit with 2 or 4 fans that can be installed on top of the 19" RNA/RNB/RSB rack series. The ventilation unit has a thermostat to keep the temperature inside the cabinet under control and avoid excessive power consumption.

- › Colour RAL 9005 (Black)
- › Complete with protective grids on the fans
- › Power supply: 230V - 50Hz



CODE	DESCRIPTION
WPN-ACS-N060-2	for 600 mm RNA/RNB racks, 2 fans + thermostat
WPN-ACS-N080-4	for 800 mm RNA rack, 4 fans + thermostat
WPN-ACS-N100-4	for 1000 mm RSB rack, 4 fans + thermostat

FAN TRAY FOR RWA/RWB SERIES

Ventilation unit with two fans that can be installed on top of the 19" rack RWA/RWB series. The ventilation unit has a thermostat to keep the temperature inside the cabinet under control and avoid excessive power consumption.

- › Colour RAL 9005 (Black)
- › Complete with protective grids over the fans
- › Power supply: 230V - 50Hz



CODE	DESCRIPTION
WPN-ACS-W040-2	for RWA 450 deep cabinets, 2 fans + thermostat
WPN-ACS-W050-2	for RWB 500 deep cabinets, 2 fans + thermostat
WPN-ACS-W060-2	for RWB 600 deep cabinets, 2 fans + thermostat

CABLE MANAGEMENT & PANELS

CABLE MANAGEMENT PANEL

- › Set of 4 screws and cage nuts included
- › Colour RAL 9005 (Black)



CODE	DESCRIPTION
WPN-ACM-001-B	2 pcs metal cable ring set 1U
WPN-ACM-101-B	Metal cable management panel 1U
WPN-ACM-102-B	Plastic cable management panel 1U
WPN-ACM-201-B	Cable guide with brush 1U

BLANK PANEL

Metal solid panel standard 19", 1/2/3 units, to close unused cabinet spaces. The use of these blank panels forces cooling air from the ventilation unit (if installed) to pass through the active equipment in the rack.

- › Set of 4 screws and cage nuts included
- › Colour RAL 9005 (Black)



CODE	DESCRIPTION
WPN-ABP-1-B	Blank panel 1U
WPN-ABP-2-B	Blank panel 2U
WPN-ABP-3-B	Blank panel 3U

CABLE MANAGEMENT PANEL WITH COVER

- › Set of 4 screws and cage nuts included
- › Colour RAL 9005 (Black)



CODE	DESCRIPTION
WPN-ACM-301-B	Cable management panel 1U
WPN-ACM-302-B	Cable management panel 2U

SCREWLESS BLANK PANEL

Metal solid panel standard 19", 1/2/3 units, to close unused cabinet spaces. The use of these blank panels forces cooling air from the ventilation unit (if installed) to pass through the active equipment in the rack.

- › Colour RAL 9005 (Black)



CODE	DESCRIPTION
WPN-ABP-1SL-B	Screwless blank panel 1U
WPN-ABP-2SL-B	Screwless blank panel 2U
WPN-ABP-3SL-B	Screwless blank panel 3U

ACCESSORIES

VERTICAL CABLE MANAGEMENT WITH COVER

Vertical cable management set suitable for 800 mm width RSA, RSB and RNA racks.

› Color RAL 9005 (Black)



CODE	DESCRIPTION
WPN-ACM-501-B	Set for RNA/RSB 800 mm, 22U
WPN-ACM-502-B	Set for RNA/RSB 800 mm, 27U
WPN-ACM-503-B	Set for RNA/RSB 800 mm, 32U
WPN-ACM-504-B	Set for RNA/RSB 800 mm, 42U
WPN-ACM-505-B	Set for RNA 800 mm, 42U

PLINTH FOR RNA/RNB SERIES

Metal base for cabinets RNA/RNB series to replace the wheels and feet.

› Colour RAL 9005 (Black)



CODE	DESCRIPTION
WPN-APT-N66	600x600 mm
WPN-APT-N68	600x800 mm
WPN-APT-N88	800x800 mm
WPN-APT-N610	600x1000 mm
WPN-APT-N810	800x1000 mm

SCREWS SET

The kit consists of 20/50 screws, washers and cage nuts suitable for installation of rack accessories and components.



CODE	DESCRIPTION
WPN-AVA-SS20	Nuts and bolts kit, 20 pcs
WPN-AVA-SS50	Nuts and bolts kit, 50 pcs

BOTTOM PLATE FOR RSA SERIES

› With 2 holes for cable entry and 2 brushes
› Colour RAL 9005 (Black)



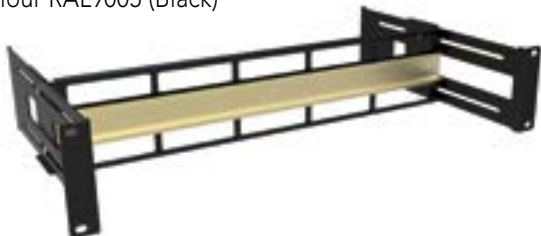
CODE	DESCRIPTION
WPN-ABS-RSA610-B	600x1000 mm
WPN-ABS-RSA810-B	800x1000 mm
WPN-ABS-RSA812-B	800x1200 mm

ACCESSORIES RACK - CABLING

DIN BAR

2U Din Bar for 19" Racks for mounting DIN equipment into a 19" rack

- › Adjustable depth 65 – 290 mm
- › Material: SPCC
- › Colour RAL9005 (Black)



CODE	DESCRIPTION
WPN-AVA-DR01	width 415 mm height 2U

DIN RAIL FIBER OPTIC PATCH PANEL

Din-Rail mount fiber patch panels with 6SC simplex/LC duplex and 6SC duplex front panel without adapters, Grey RAL 7035.

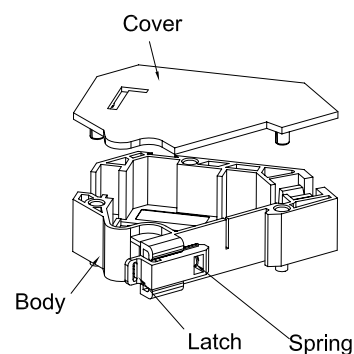
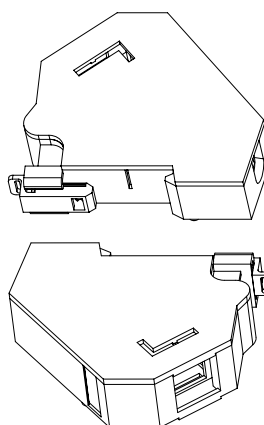
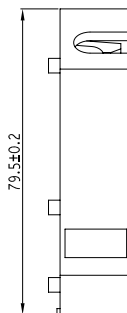
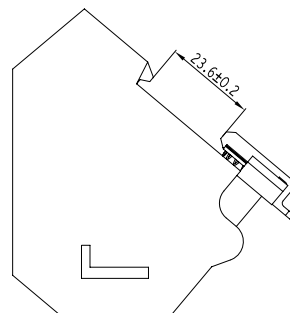
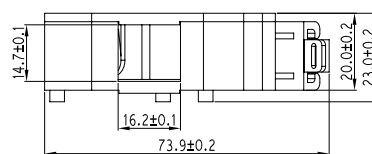


CODE	DESCRIPTION
WPC-FPB-06-G	HxWxD 36,4x128,8x130 mm

DIN-RAIL ADAPTER FOR KEYSTONE MODULES

Industrial Din-Rail mount unequipped IP20 adapter for Keystone sockets with port numbering. Features designed to save space especially by installing more than one next to the other because it's possible to hook several modules together without using the cover, the second module will close the first one and so on. It can be installed with the cable entry from the bottom or from the top.

- › DIN rail mounting
- › Assembly without special tools
- › DIN rail adapter
- › DIN 43880
- › Easy mounting
- › Dimension: (HxWxD) 73,9x23x79,5 mm
- › Weight: 40 gr



CODE	DESCRIPTION
WPC-DBX-B1-W	HxWxD 73,9x23x79,5 mm